

VISUALIZE EVERY BYTE OF YOUR **sage 300** DATA IN REAL-TIME



01

PRE-BUILT

50+ ERP Integrations

02

100+

Fully Functional Pre-built Dashboards

03

BUILT-IN

Automated Data Warehouse

04

INSTANT ROI

on your Investment

GO LIVE on DAY ONE

INTEGRATE ALL YOUR DATA INTO ONE PLATFORM

ANVIZENT ANALYTICS FOR **sage** 300 – MAXIMIZE ROI ON YOUR SAGE 300 INVESTMENTS

Running an efficient and profitable business requires you to stay agile and respond quickly to fast changing conditions. This means having quick answers to key questions such as:

The data is all there in your Sage 300 ERP System. However, the information you need is often slow to arrive and difficult to interpret due to the manual nature of reporting processes. What good is a cash flow statement if it is weeks old or doesn't provide adequate visibility into current cash flows!

- ▶ Are we paying our suppliers on time?
- ▶ Are our customers paying us on time?
- ▶ Are our customers paying us according to the payment terms we agreed to?
- ▶ What's our Days Payable Outstanding (DPO)?
- ▶ What's our Days Sales Outstanding (DSO)?
- ▶ What's our current Revenue, COGS and Gross Margin?
- ▶ What is our Cash Flow?
- ▶ And many more such questions

Visualize Every Byte of Your Sage 300 Data in Real-Time

Imagine if you could get instant answers to all your business critical questions. If you could get the real-time status of cash flows, accounts receivable, accounts payable and gross margins. If you could dig deeper into your data to understand performance across regions, products, customers and suppliers.

Anvizent is a fully integrated end-to-end data management and analytics solution that provides real-time, self-service analytics without the hassle of manual programming and data preparation. Anvizent integrates your Sage 300 data and other enterprise data into one platform. Leverage 100+ fully functional pre-built dashboards to gain a single, unified view of business performance. Track and analyze your entire operations to spot trends and uncover hidden issues and opportunities. Get proactive alerts and collaborate instantly with colleagues to keep operations running at their peak.

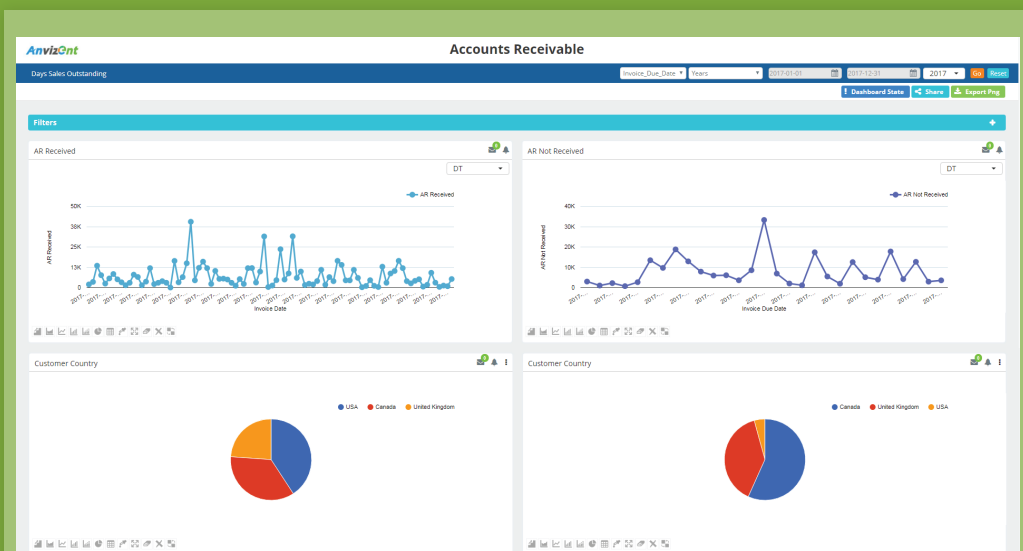


It's time to harness the full value of your Sage 300 ERP data by accessing rich, real-time insights.

Gain Instant Insights into Business Performance

With AnvizEnt, it is easy to find the information you need to monitor progress and make certain that operations are on track. Configurable pre-built dashboards provide at-a-glance visibility into performance, allowing you to easily drill-down to find what is needed to drive performance.

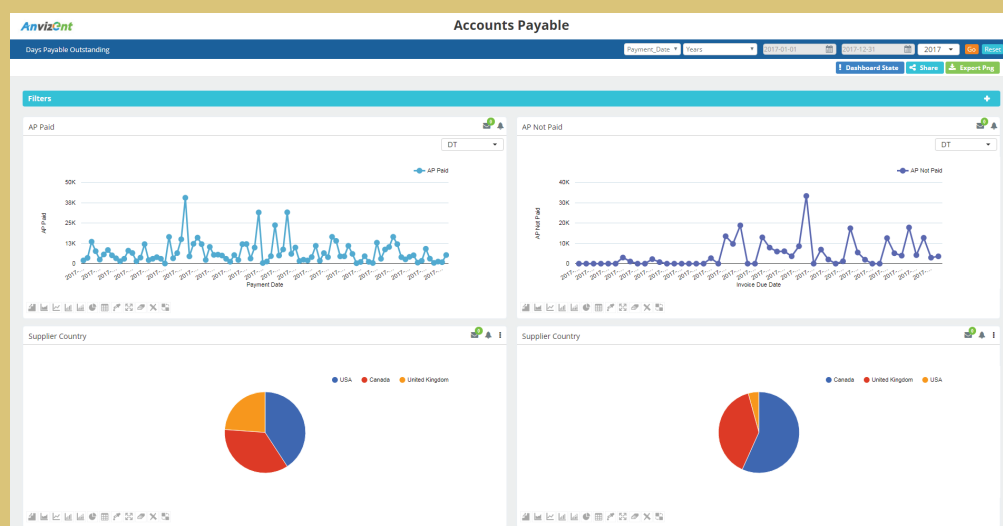
Accounts Receivable



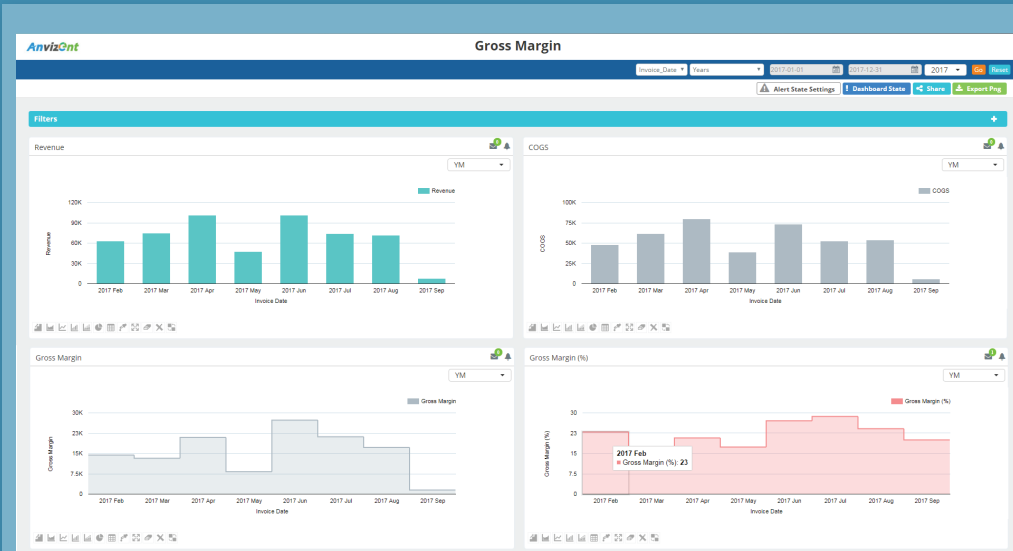
Get an accurate, up-to-date view of current & historical balances to identify present and potential problems. Understand payments received, payments past-due and age of receivables at any given point-in-time. Drill down to analyze performance across regions, customers and individual sales orders and understand your best and worst performers.

Accounts Payable

Keep track of your accounts payable to strengthen relationships with your vendors. Visualize payments made and outstanding payments across regions and suppliers right down to individual purchase orders. Receive alerts when invoices are in danger of going past-due and take timely action to avoid late payment penalties.



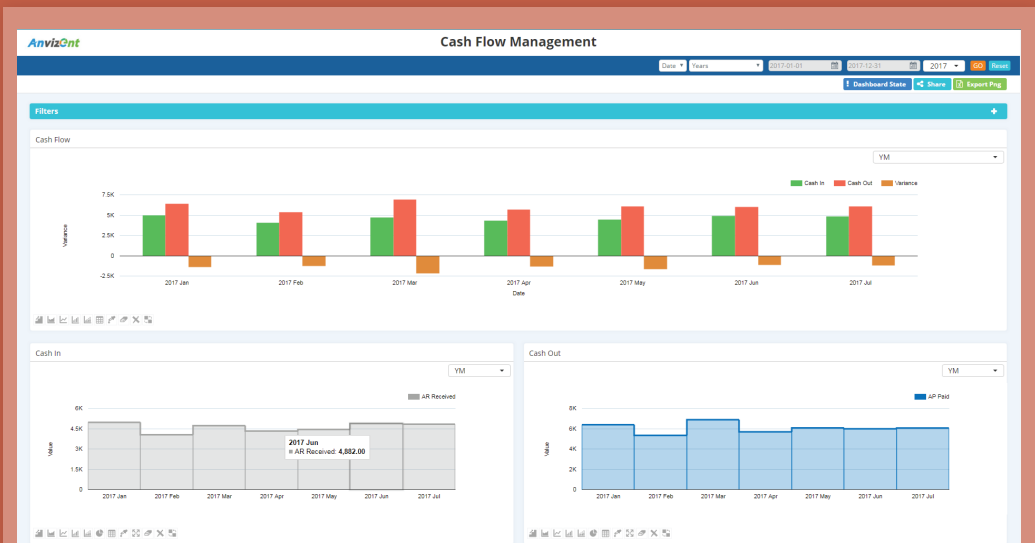
Gross Margin



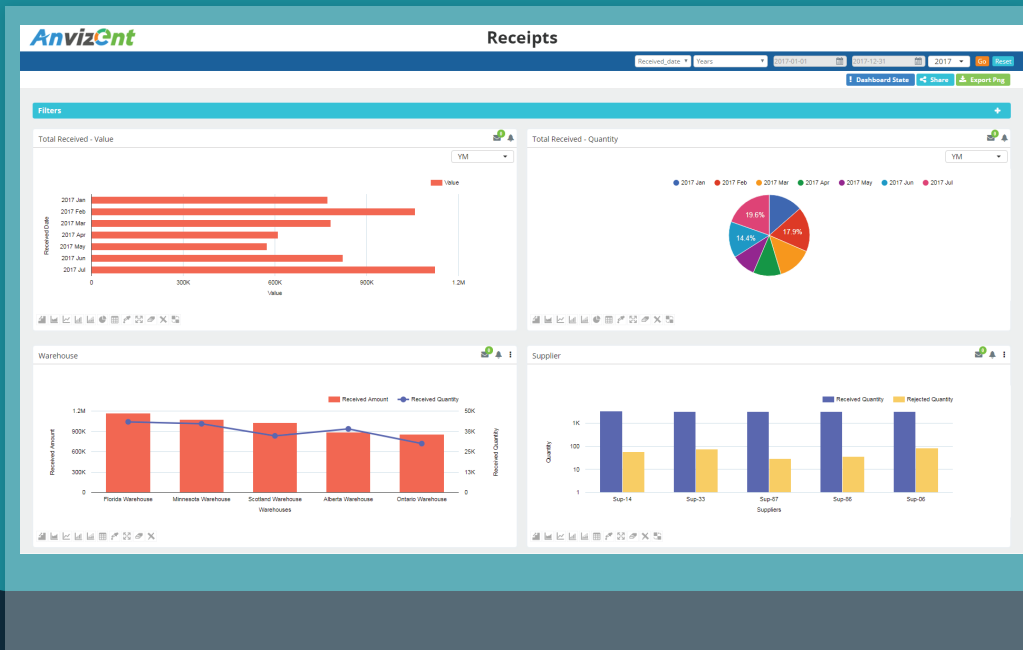
Monitor your business' profitability with at-a-glance views of profit margins. Perform a side-by-side analysis of revenues and costs on any given day, week, month, quarter and year. Understand margins across product categories, product lines, customers and sales orders. Compare trends over time and analyze deeper to understand changes.

Cash Flow Statement

Gain instant visibility into how much money is coming in and how much money is going out at any given moment. Monitor and analyze variance by the year, quarter, month, week or day. Understand upcoming receivables and payables to identify potential cash flow problems. Set up customized alerts and take action when needed.



Receipts



Keep track of how much inventory being received into the warehouse at any is given time period. See which products have been received at which locations and from which vendors. Monitor put-aways and identify opportunities to improve the speed and efficiency of the stocking process.

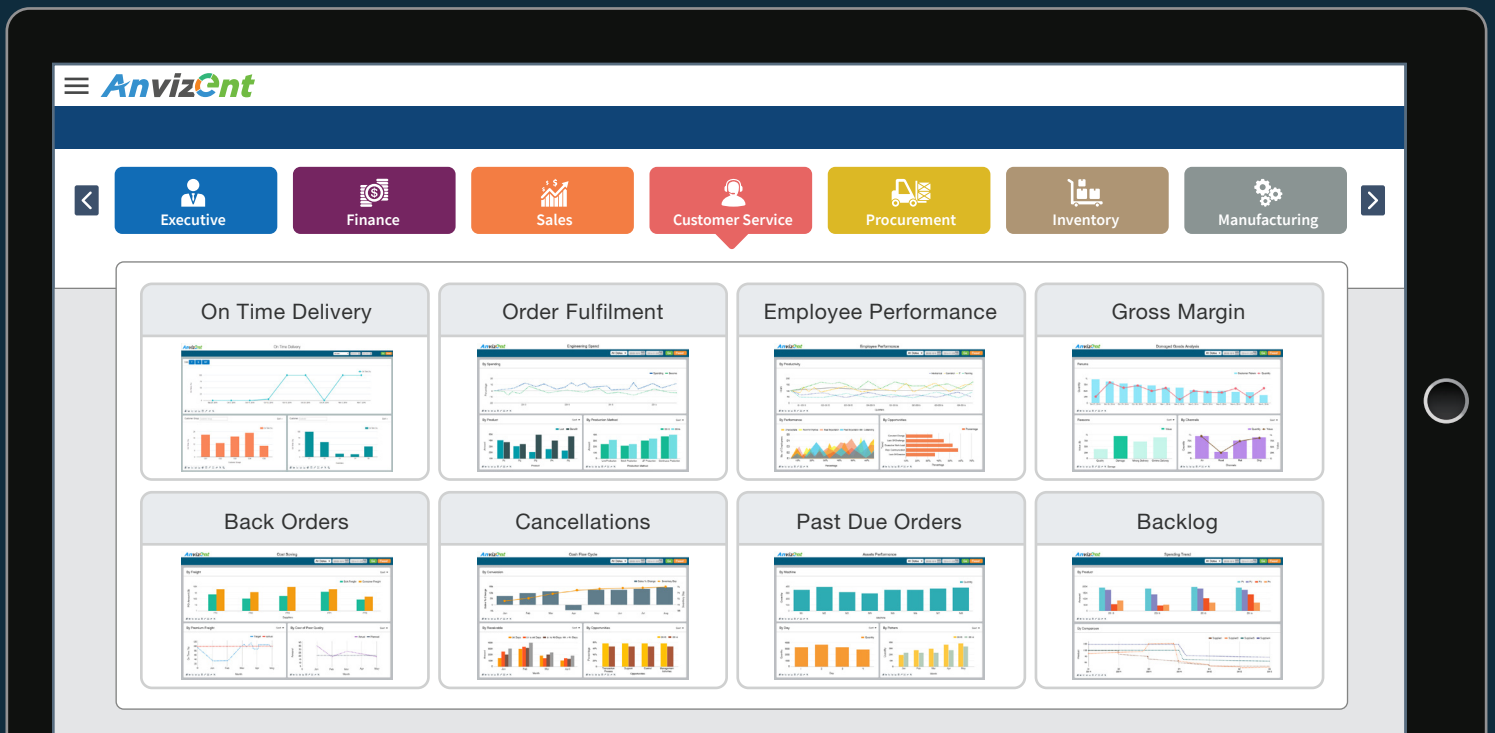
On-Hand

Streamline deliveries with complete visibility into your inventory levels. See on-hand inventory at a glance so you know exactly what materials you have, where they are and if they have been allocated to any of your customers. Drill down to understand inventory positions across regions and at all warehouses.

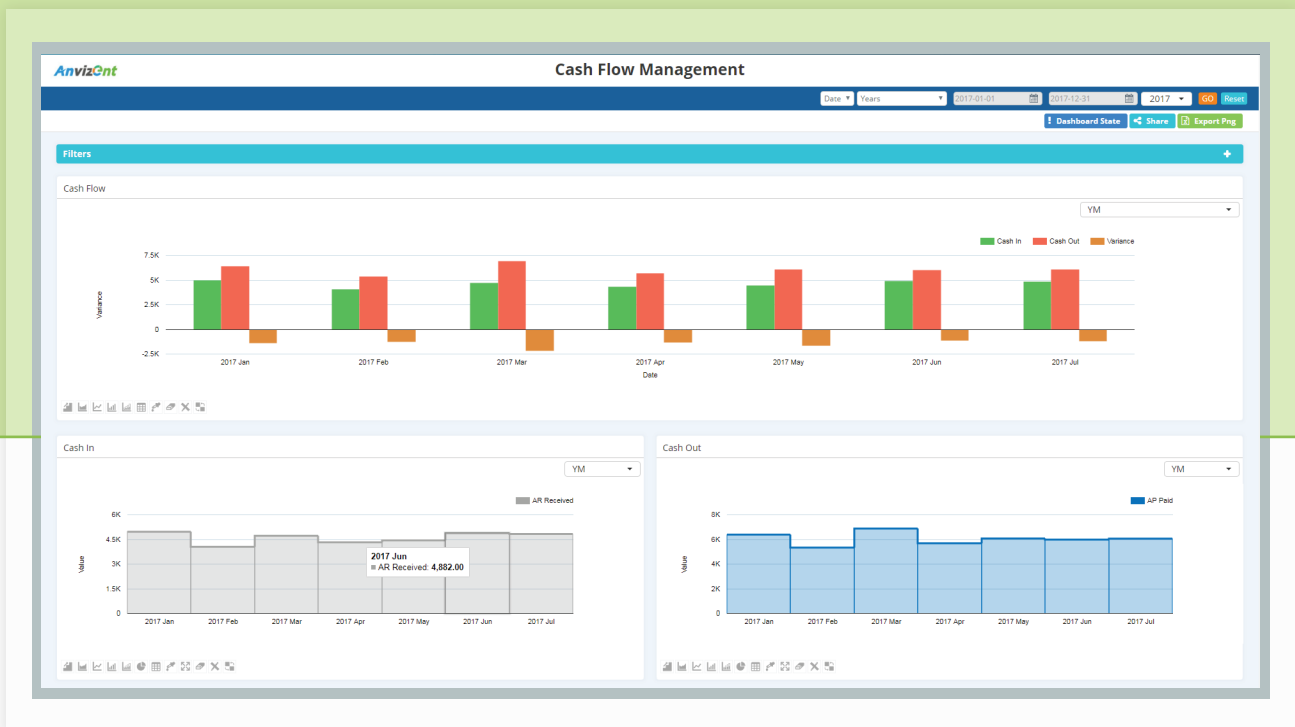


And More...

100+ FULLY FUNCTIONAL PRE-BUILT DASHBOARDS



Eliminate lengthy, manual reporting cycles. Get one-click access to 100+ fully functional industry standard dashboards with the metrics that matter the most to you. Quickly see the big picture and drill down to get fast answers to all your business questions.



ALL YOUR **DATA** AT YOUR FINGERTIPS

Gain unprecedented visibility and real-time control of your operations. Track all your KPIs on-demand, get alerts to issues and collaborate instantly with colleagues to keep your operations running at their peak. You can Go Live on Day One with 100+ fully functional pre-built dashboards. A few of these are listed below:

Executive



- Shipments
- Bookings
- Backlog

- Cash Flow
- Purchasing Spend
- Engineering Backlog

- Profitability
- Inventory
- Headcount

- Standard Cost
- Return on Assets
- Return on Equity

- Net Profit Margin
- Inventory
- Cash Flow

- Gross Margin
- Operating Margin
- EBITDA



Finance

Customer Service



- Quality
- Service
- First Response Time

- Order Accuracy
- Order Entry Rate
- Delivery Performance

- Fulfillment
- Returns
- Lead Time

- Shipments
- Bookings
- Growth

- Opportunities
- Leads
- Quotes

- Attempts
- Contacts
- Conversations



Sales

Inventory & Warehouse



- On-Hand Inventory
- Adjustments
- Movements

- Warehouse Capacity
- Utilization
- Inventory Turns

- Obsolescence
- Order Fulfillment Accuracy
- On Time Shipping

- Cost Savings
- Quality
- Delivery

- Cost Avoidance
- Implemented Cost Reduction Savings

- Procurement Cycle Time
- Procurement ROI
- Contract Compliance



Procurement

Logistics



- Cost per Unit Shipped
- On Time Pickup
- On Time Delivery

- Damaged Freight
- Outbound Freight Cost to Sales Ratio

- Inbound Freight Cost to Sales Ratio
- Transit Time

REVOLUTIONIZING ANALYTICS

Take control of your business like never before! Make well informed decisions with graphic information that is accurate, rich, real-time and in the palm of your hand. Self-service insights from all your data – ERP data, CRM data, MES data or any other data. No programming, no manual data preparation, no waiting for reports and dashboards.



Pre-Built Integrations

Access Data On-Demand

- Explore all your data instantly
- Make decisions faster and with greater confidence
- Minimize burden on IT teams

Integrated View of Business Performance

Built-In Automated Data Warehouse

- Integrate and consolidate data from disparate sources – No Manual Data Preparation
- Analyze data across multiple business units, currencies etc.
- Analyze current and historical data



True Self-Service Visualization

Faster Deeper Insights

- Create new dashboards in just 3 clicks
- Get instant answers to ad hoc business questions
- Drill down to discover hidden opportunities and risks

Analyze Operations in Real-Time

100+ Pre-built Dashboards

- Get continuous visibility into your entire operations: from sales to shipments
- Track progress, spot trends, isolate issues and drive immediate improvements
- Stay on top of business performance from anywhere, at any time, on any device



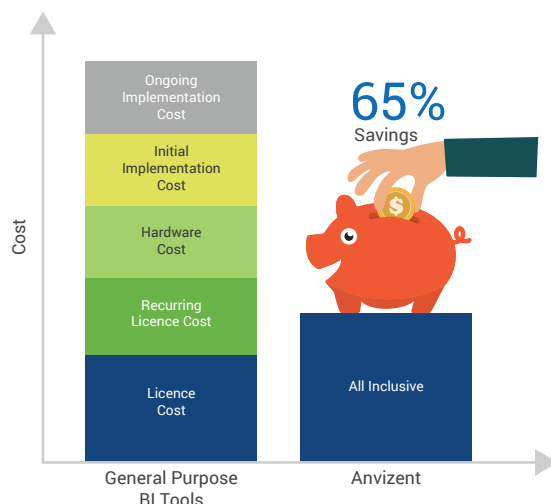
Alerts and Collaboration

Shift From Reactive to Proactive

- React faster to critical issues and opportunities with real-time alerts
- Make timely and informed decisions by collaborating instantly with colleagues
- Improve overall agility and productivity

A FULLY INTEGRATED **END-TO-END** ANALYTICS SOLUTION

A FULLY INTEGRATED
END-TO- END
ANALYTICS SOLUTION AT
THE LOWEST TOTAL COST
OF OWNERSHIP (TCO)



* The above calculations are as per Gartner's three-year BI platform ownership cost for midsize enterprises

	Anvizent	Others
All Your Data in One Platform	✓	✗
Pre-Built ERP Integration	✓	✗
Built-In Automated Data Warehouse	✓	✗
100+ Pre-Built Dashboards	✓	✗
ZERO CAPEX	✓	✗
End to End Analytics Solution	✓	✗
Patent Pending Technology	✓	✗
GO LIVE on DAY ONE with No Setup Cost	✓	✗

EVALUATE ON YOUR ENTIRE DATA

We will implement Anvizent overnight on your entire Data at zero cost to you.

TEST ► DRIVE for 30 days. Pay for it only if you like it.



Connect and Analyze
your current and
historical data



Build correlation among
various business attributes
with our Automated Data
Warehouse



100+ Pre-built
Dashboards

About Anvizent

Anvizent is the result of 20 years of data warehousing and data management expertise implementing various data warehouses at several companies around the globe.

Anvizent is the Purpose-Built Manufacturing Analytics Solution. Anvizent integrates your entire data including ERP Data, CRM Data, Shop Floor Data and any other data into one platform. Anvizent is a fully integrated end-to-end solution that comes with 50+ ERP Integrations, Built-In Automated Data Warehouse and Self-Service Visualization with 100+ Pre-Built, Fully Functional Manufacturing Specific Dashboards.

Anvizent can be deployed overnight at the lowest Total Cost of Ownership (TCO). This ensures instant value and a faster Return on Investment (ROI) than any other solution in the market.

USA +1 844 220 8564

Germany +49 6925 7367 440

UK +44 203 478 5606